

SETEC

Engineering

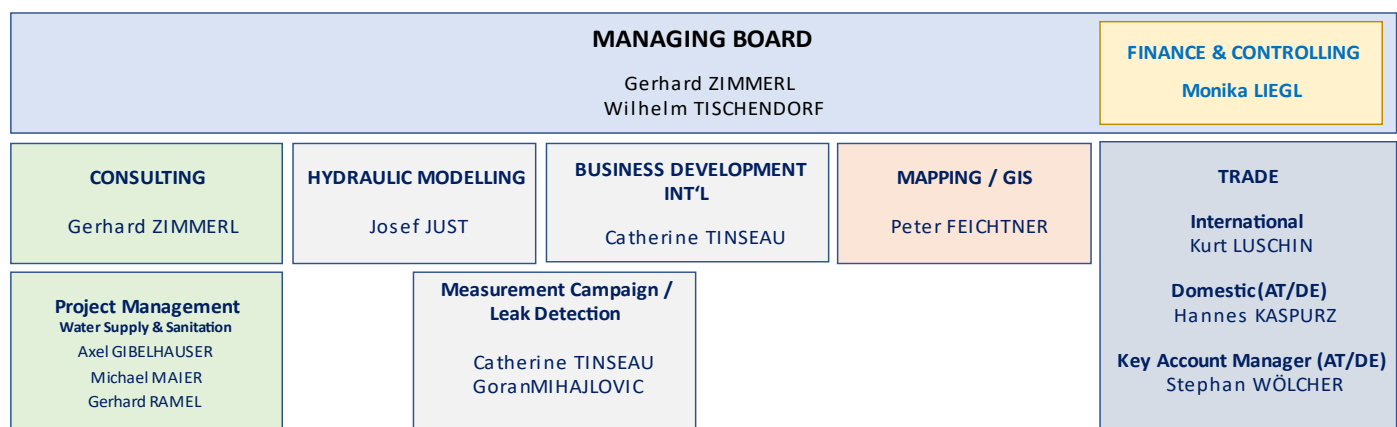
Company	SETEC Engineering GmbH Feldkirchner Strasse 50 9020 Klagenfurt AUSTRIA
Contact	Managing Directors: Mr. Gerhard ZIMMERL, Mr. Wilhelm TISCHENDORF Tel: +43-463-5808-0 / Fax: +43-463-5808-5 info@setec.at
Establishment	in 1999 , succeeding to SEBA Messtechnik founded in 1966
Legal Status	Limited Liability Company Registered at the Court of Commercial Registration, No. FN 179593h in Klagenfurt, Austria
SETEC owns	SETEC E&C d.o.o. , Belgrade, SERBIA
Majority owner of SETEC	Dahlem beratende Ingenieure GmbH & Co. Wasserwirtschaft KG , Essen, GERMANY

SETEC Engineering's company history dates back to 1966 when SEBA Messtechnik was founded as a company specialized in leak detection. In 1999, SEBA Messtechnik was renamed SETEC Engineering, and the employees and their collective expertise remained a valuable asset. SETEC is internationally well-renowned, its major fields of activity are steadily growing and currently comprise:

- Non-Revenue Water reduction measures: SETEC Engineering is very well known internationally for leak detection activities as well as for the training of water works staff.
- Hydraulic modelling is the basis for any state-of-the-art improvement to a water or sewerage network. In cooperation with a well-known research institute, SETEC developed the hydraulic modelling software program, NESEI®, which is used in Austria, Germany and in many other countries worldwide.
- Due to SETEC's mother company, Dahlem, we have become a key player in the planning and implementation of sewage treatment plants and sewerage systems.
- Recently, SETEC has expanded its activities to solid waste management programs.
- Technical investments require institutional support, over the last 20 years SETEC has acquired wide-ranging expertise in the institutional strengthening of water utility companies, committed to economic sustainability, financial planning, human capacity building.

Over the past 20 years, SETEC Engineering has developed a comprehensive service package for CONSULTING SERVICES for potable water supply and wastewater systems including master planning, feasibility study, design, procurement, construction supervision and institutional strengthening of the water utilities.

SETEC Engineering - ORGANIGRAM



SETEC Engineering - KEY DATA

Technical disciplines	WATER SUPPLY - rehabilitation, extension <ul style="list-style-type: none"> • Mapping, network information systems • Network analysis, field measurements • Hydraulic Network model, calibration based on flow and pressure on-site measurements • Non-Revenue Water evaluation, reduction measures • Leak detection campaigns 	WASTEWATER - rehabilitation, extension <ul style="list-style-type: none"> • Sewer • stormwater • treatment plant • sludge stabilization • water reuse • rural sanitation, EcoSan latrines
	SOLID WASTE <ul style="list-style-type: none"> • choice of waste treatment lines and capacity • waste collection scheduling 	<ul style="list-style-type: none"> • site selection • leachate treatment
Staff	26 permanent employees, including:	
	Project Managers Hydraulic Experts (sewer & water supply) Water & Sewage (network & process) Design Eng. Solid Waste Specialists	Environmental, O&M Specialists Civil, Mechanical Engineers NRW Experts, Leak Detection Specialists Mapping / GIS Experts
	Financial Expert Tariff Modelling Expert, Commercial Expert Legal Expert	Utility Capacity Building Expert MIS / IT Expert Institutional Expert
Equipment	for Mapping / GIS update	
	GPS survey equipment, GIS software	
	for Water Balance Assessment / Calibration of the Hydraulic Model	
	portable ultra-sonic flow meters, digital pressure loggers, water level sensor	
	for Leak Detection	
	water loss analysis vans, geophones, leak noise loggers, leak noise correlators, pipe detection instruments, valve spindle locators	
Software development	Hydraulic Network Simulation NESEL ®	
	Software development for data exchange interfaces	
	Cloud computing technology	
International experience	Europe – South / East	
	Albania, Bosnia and Herzegovina, Bulgaria, Croatia, Estonia, Georgia, Kosovo, Latvia, Macedonia, Romania, Serbia, Turkey	
	Africa	
	Algeria, Egypt, Morocco	
	Angola, DR Congo, Ghana, Kenya, Madagascar, Malawi, Namibia, Nigeria, Tanzania, Uganda, Zambia	
	Middle East	
	Iraq, Jordan, Kuwait, Palestine, Saudi Arabia, Syria, Yemen	
	South America	
	Bolivia, Jamaica, Mexico, Peru	
	Asia	
	Bangladesh, China, Indonesia, Philippines, Sri Lanka, Taiwan, Vietnam	
	Kazakhstan, Kyrgyzstan, Nepal, Tajikistan, Uzbekistan	

PROJECT MANAGEMENT

- Project evaluation and implementation plan
- Selection of bidders, manpower appointment and skill matching
- Legal arrangements

- Adherence to standards
- Contingency planning and strategic intervention
- Management of disposition funds
- Kick-off meetings, coordination between stakeholders

ENGINEERING SUPPORT

Feasibility Studies

- Inventory and problem diagnosis
- Data collection
 - Map update, recommendations for GIS
 - field measurements – water balance assessment, NRW rates
- Hydraulic modelling
 - onsite calibration measurement
 - running of scenarios
 - recommendations for sectorization, for SCADA
 - prioritization of improvement measures
- Schematic designs
- Cost estimates, Assessment of return on investment
- Investments Schedule

Design

- Reconnaissance study
- Preliminary designs and cost estimates
- Computer modelling, scenarios study
- Detailed designs: technical specifications and bill of quantities
- Environmental Impact Assessment

Tendering & Procurement

- Preparation of procurement plans
- Preparation of BoQ, tender documents
- Preparation of pre/post-qualifications documents for suppliers and contractors,
- Tendering and evaluation, contract negotiation

Construction Supervision

- Contract coordination, budgeting and monitoring
- On-site supervision
- Quality control, equipment commissioning and inspection

INSTITUTIONAL SUPPORT

Institutional Strengthening Measures

- commercial sustainability (tariff study), financial planning
- Improvement of technical and operation effectiveness
- Developing strategies for enhancing staff capabilities – capacity building & training
- Launching of required new soft- and hardware means and methods
- Legal assistance to the water operator on issues related to contractual regulations (incl. EU accessions)

Implementing strategies for reducing Non-Revenue Water comprising controlled administrative losses

- Verify, update and improve customer database
- Improve commercial procedures
- Update tariff adjustment plans
- Asset Valuation
- Development and Application of Management Information System
- Development and Application of Business Planning
- Legal Aspects
- Performance Monitoring and Benchmarking
- Public awareness and customer relationship
- Organization and human resource development
- Elaboration and implementation of an Operation and Maintenance concept
- Elaborate and implement loan repayment procedure
- ICT solutions covering: assets and O&M management, NRW analysis, smart metering, reading, billing accounting and financial management

Project Management Support

- Project administration, establishment of Project Monitoring Unit, procedures manual
- Project Management Support: know-how transfer on project management concepts, tools and activities
- Technical Support: supervision of design, provide technical capability
- Institutional Support: training, procurement

PREPARATION of OUTPUTS

Deliverables and Special Reports; Workshops; Study tours